



35 SALEM STREET SPALDING, PE11 4NQ

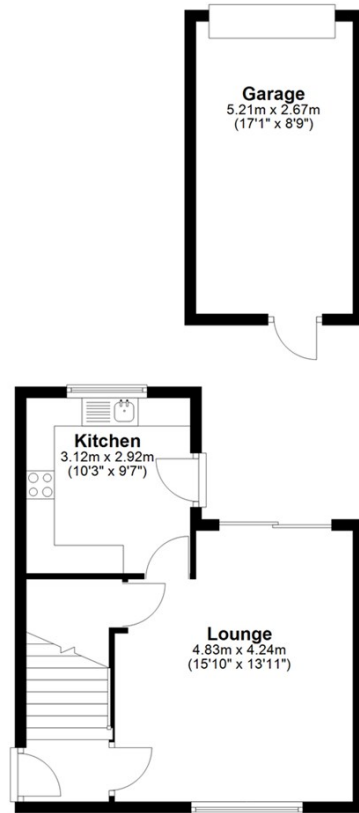
£895 PER MONTH

This modern two-bedroom home in Gosberton offers stylish and well-proportioned living space. The ground floor features a spacious lounge with sliding doors opening onto a large enclosed rear garden, and a contemporary kitchen with direct garden access. Upstairs, there are two double bedrooms and a modern family bathroom. Additional benefits include an integral garage with internal access and a quiet residential location close to local amenities.



Ground Floor

Approx. 48.8 sq. metres (525.8 sq. feet)



Total area: approx. 84.2 sq. metres (906.5 sq. feet)
35 Salem Street



Energy Efficiency Rating		
	Current	Potential
Very energy efficient - lower running costs		
(92 plus) A		
(81-91) B		
(69-80) C		79
(55-68) D		
(39-54) E		
(21-38) F	40	
(1-20) G		
Not energy efficient - higher running costs		
England & Wales	EU Directive 2002/91/EC	

Agents Note: Whilst every care has been taken to prepare these particulars, they are for guidance purposes only. All measurements are approximate and are for general guidance purposes only and whilst every care has been taken to ensure their accuracy, they should not be relied upon and potential buyers/tenants are advised to recheck the measurements

Spalding Office Lettings
11 The Crescent
Spalding
Lincolnshire
PE11 1AE

01775 713 888
enquiries@sedge-homes.com
www.sedge-homes.com

